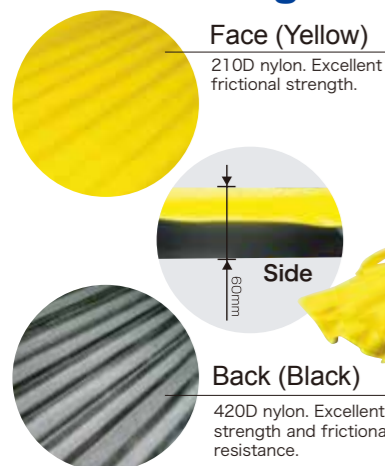


Compact storage and carriage for use in emergencies.
Use for support and comfort until a rescue party arrives.

Inflates instantly with a CO₂ gas cartridge.
Seven air bags inflate strongly.



Stock number : EX05-YB

Inflates within 3 seconds.

By inflating the EXTretcher it is easy to carry an injured person with full support and safety. It may also be used as a rest bed for emergency use.

Effective patient support.

The patient is supported and protected from movement by the compression and curvature of the airbags. Firm and stable support especially at the head, neck, spine and waist. The patient may be carried without the need for restraining straps due to the airbags support and containment.



Compact and Lightweight.

Storage in a bag only 30 x 35 x 7 cm and weighing only 2.5 kg. Convenient to locate, carry and transport.



Carriage and transportation impacts are reduced.

With the airbag construction, even if there are bumps or impacts into objects or obstacles, such as stairs, impacts are absorbed and reduced.



Easy to operate

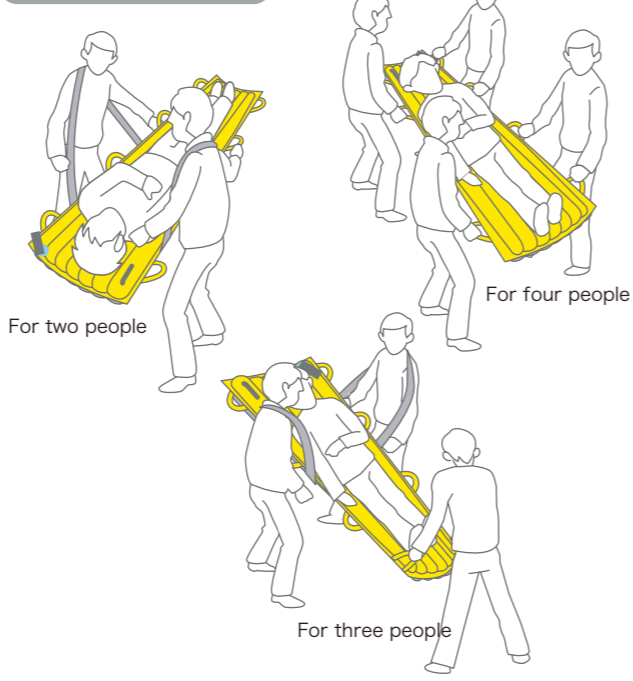
How to inflate

⚠ Do not inflate EXTretcher when it is folded or rolled.

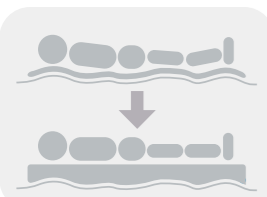


- 1 Take EXTretcher out of EXTretcher Bag and spread out.
- 2 Hold CO₂ cartridge upright (as above) and pull cord of the activation device downwards to activate/inflate EXTretcher.
- 3 Fully inflated (within 3 sec. from activation) and usable.

User carrying images

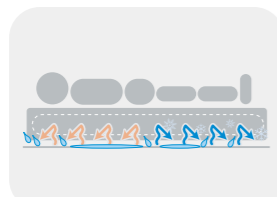


Advantages of airbag stretcher design



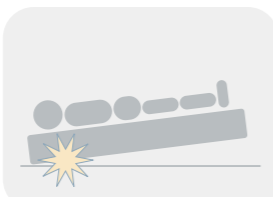
Support in different situations.

Full and stable support for patient on uneven or soft ground or even water.



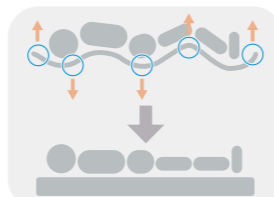
Prevention of transmission of heat or cold.

The airbag construction prevents the transmission of cold (eg. snow) or heat (eg. hot road surface) to the patient, and protects against wet ground conditions.



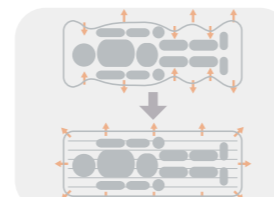
Impact cushioning.

Any impacts from bumps or falls are cushioned due to the airbag compression and pressure distribution.



Superior body support.

Due to weight and pressure distribution to the 7 cylindrical airbags, the patients' body is fully and firmly supported, especially at head, neck, spine and waist.



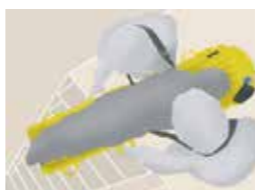
Effective load distribution and stability.

The patients' weight is evenly supported and distributed by the cylindrical airbags and the support / lifting power from the carriers is also shared effectively.

Flexibility

- Easier movement in difficult and limiting spaces, such as stairwells and lifts, since there is no frame and lighter weight.
- Easy compact storage in car or office.
- Can be cleaned easily by hand washing in water.

Easier movement in difficult spaces and sites.



This EXTretcher is suited for leisure and outdoor because it is compact and light weight.

The stretcher is made of nylon and can be cleaned by hand washing in clear water. It can be used repeatedly.



Specifications

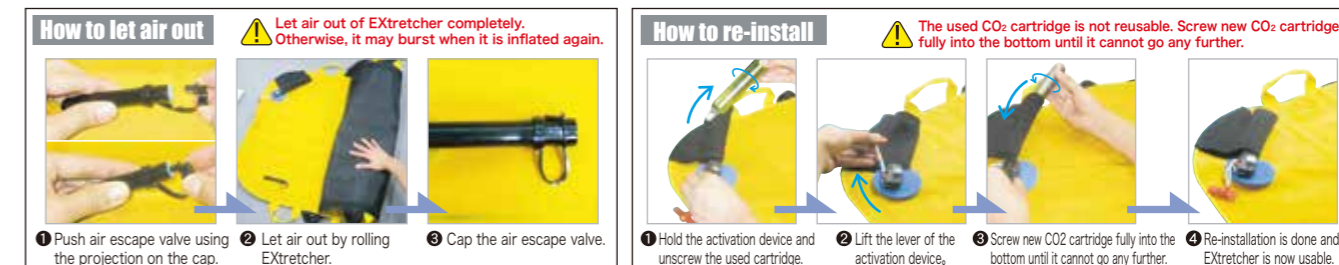
Airbag: Face(Yellow)/210D Nylon(PU laminated)
Back(Black)/420D Nylon(PU laminated)
Size (packed in bag): 350 x 300 x 70 mm
Size (inflated): 1750 x 600 x 60 mm
Weight: 2.5 kg
Cartridge: CO₂ gas cartridge 70g

Where to use

The EXTretcher may be used at:
Office / School / Hospital / Factory /
Government and municipal offices /
Nursing facilities / Hotel /
Public transportation /
Leisure and sports facilities / etc.

1. Do not take any parts of EXTretcher apart.
2. Do not inflate EXTretcher when it is folded or rolled.
3. Let air out of EXTretcher completely to pack it into the EXTretcher Bag.
4. Keep and use it at a temperature below 40°C.
5. Keep the EXTretcher away from open flames, hot items, and cigarettes as holes or tears caused by them will prevent airbag inflation.
6. Inspect EXTretcher for any damage before use.
7. Inspect EXTretcher annually. Arrange maintenance by an authorized dealer (pay service) as required.

How to re-install CO₂ If there is no damage to EXTretcher, it is reusable repeatedly by replacing CO₂ cartridge.



- 1 After use, push the air escape valve using the projection on the cap and roll the whole EXTretcher to deflate completely.
⚠ Put the cap on the air escape valve after deflation without fail.
- 2 Unscrew and take out the used cartridge, lift the lever and install new cartridge. To pack and keep EXTretcher in EXTretcher Bag, follow the instructions as below.

How to pack EXTretcher into bag

⚠ If any air is left inside EXTretcher, it will not be packed properly.

