

Thank you for using the Hit-Air.

For your safety, peace of mind and correct use of your airbag jacket, make sure that items ①-⑤ are confirmed before use as follows:

- Caution** ⚠
- Unless the Hit-Air is set correctly, it may not work or may cause a malfunction.
 - Once a CO₂ cartridge is activated, it cannot be used again. Remove it from the key box without fail.
 - Use a Hit-Air CO₂ cartridge only. Do not use any other one.

① A CO₂ cartridge of the right size (capacity) for the model is installed.

The seal attached the cartridge shows its size (capacity).

② Sealed properly (No damage to the seal)

*No seal is attached in case re-assembling is done by yourself.

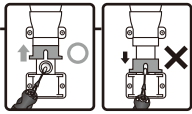
Unused CO₂ cartridge and the key box are properly sealed at the time of shipment. (*The key ball is set)

*In some countries or regions, the hit-air is sold without the security-check-sticker on it. If this is the case, please make sure that an unused CO₂ cartridge of the correct size is properly installed to the key box.

- The right size (capacity) cartridge for the model is installed.
- A CO₂ cartridge is tightly screwed into the key box.
- An used/empty cartridge should not be installed.

Caution ⚠ Re-assembling after the activation must be done in accordance with "Re-assembling Key Box" (see page 26 to 28)

③ The red slide cover is lifted to the "unlocked" (up) position.



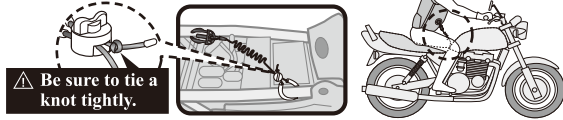
④ Is there any deterioration of the wire loop or the coiled wire?

⑤ A screw hole at the bottom of the key box is visible.

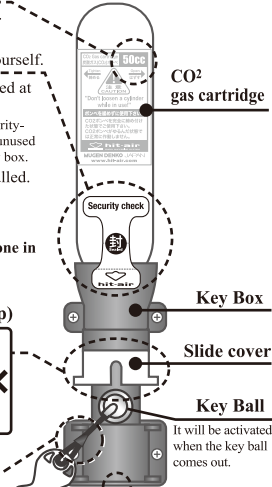
(The setting bolt is removed)

⑥ A coiled wire is set properly.

See "Attaching Coiled wire to Motorcycle" (page 21 to 23)



⚠ Be sure to tie a knot tightly.



①

②



Photo 12

End

12. Take the connector out through the hole of the key box cover. Close the zipper around the key box. (Photo 12)

CAUTION ⚠ If the cartridge is not seated completely and firmly, the Hit-Air may not be activated/inflated.

11. Screw a new CO₂ cartridge. (Photo 11) Please confirm if the seal of the cartridge is not punctured and it's new.

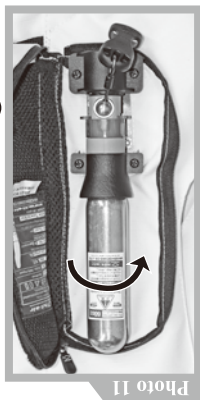


Photo 11

Screw an unused cartridge as indicated on the sticker attached to the cartridge.



If a problem listed below is found on the Hit-Air, consult with an authorized dealer to change or repair/replace.

1. Fabric part becomes frayed or torn. And/or the inner tube (white polyurethane film) is exposed.
2. A crack or rust is found on the "key box" or on the gas cartridge.
3. The "coiled wire" or the "wire loop" gets scraped and frayed.
4. Considerable change of color or deterioration of material is found.

②6

③

- ▶▶ 1 Safety Precautions
- ▶▶ 2 General Information
- ▶▶ 3 Name and Shape
- ▶▶ 4 Structure
- ▶▶ 4-1 Function
- ▶▶ 4-2 Air Cushion
- ▶▶ 4-3 Key Box
- ▶▶ 4-4 Key Ball
- ▶▶ 4-5 Hit-Air Structure
- ▶▶ 4-B Hit-Air CO₂ gas cartridge
- ▶▶ 5 Using Hit-Air
- ▶▶ 5-1 One-touch Release
- ▶▶ 5-2 Connecting Coiled Wire and Hit-Air
- ▶▶ 5-3 Attaching Coiled Wire to Motorcycle
- ▶▶ 5-4 Where and how to fix a Coiled Wire
- ▶▶ 5 Attention after Activation
- ▶▶ 7 Re-assembling Hit-Air after Activation
- ▶▶ 7-1 How to Re-assemble
- ▶▶ 7-2 Re-assembling Key Box
- ▶▶ 8 Washing
- ▶▶ 9 How to Store
- ▶▶ 10 Change

○ Thank you for your purchase.
○ For the proper use of the Hit-Air, please read this booklet carefully before use.
○ Please carry this booklet whenever you use the Hit-Air.