

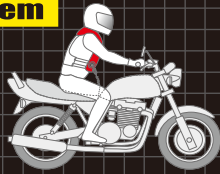
# NECK AIRBAG HARNESS

Neck airbag system / Harness type

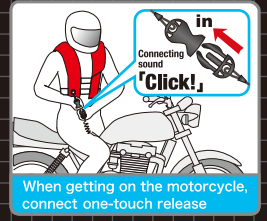
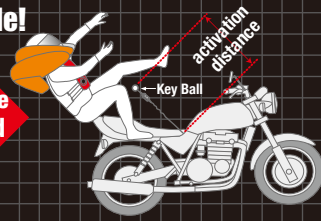
Hit-Air airbag instantly inflates when a rider is thrown from the motorcycle!

## Shock-buffering protection system

At the moment the key ball is pulled out from the key box, the airbag deploys instantly.



Deployment time about 0.25 second



## NW

## DOUBLE NECK AIRBAG SYSTEM

**Labels:** Air tube, Neck airbag, Reflex badge, Detaching passing case (name card), Side adjustment belt, Buckle, Key Box (Y-type), CO<sub>2</sub> 30cc, Key Box Moulding hole, One-touch release, Coiled wire.

**Features:** Easily attachable to Velcro (female) of the hit-air. (For back padding), Easily attachable to Velcro (female) of the hit-air. (For chest padding).

NW (Neck airbag/Harness)	
<b>SIZE</b>	S (XS~S) Effective width:85~100cm L (M~2XL) Effective width:95~120cm
<b>COLOR</b>	Black
<b>CO<sub>2</sub> Cartridge</b>	30cc
<b>Weight</b>	800g
<b>Material</b>	600D (Polyester), Nylon Air mesh (Polyester)

**Diagram:** Illustration of a person's torso showing 'Chest' and 'Waist' with 'Effective width' indicated.

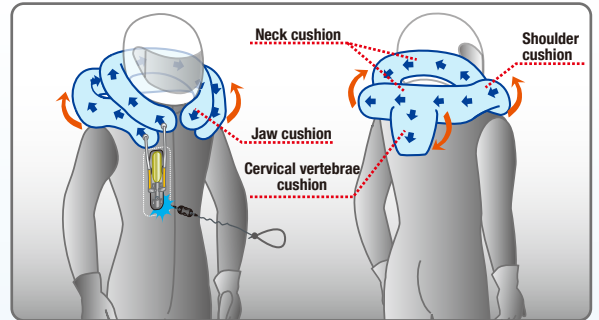
**Options:** CO<sub>2</sub> 30cc, REFLEX, SPIDI, Option (Light), Option (Phone), Option (GPS).

## 展開時 DOUBLE NECK AIRBAG SYSTEM



Gas release valve and valve cap **SPIDI is no valve.**

## Neck Airbag structure



## Airbag System

**CAUTION Print** (55mm x 28mm): To let air out of the inflated airbag quickly, take the cap off the valve. (Cap CO<sub>2</sub>)

**Velcro tab (hard)** (30mm x 25mm): Tape W25mm, Velcro (hard) W25mm.

**Backside Moulding Velcro (hard)**

**KeyBox** (W38mm x H100mm)

## Body / Wear

**Velcro tab (soft)** (W25mm x 30mm): Inside pile, Velcro (soft), Stitch.

**Velcro (Soft)** (W38mm x H100mm)