

HR_logo&horse



HR_airbag_system_2014_ol

hit-air SHOCK BUFFERING SYSTEM
Horse Riding
Wearable airbag

hit-air airbag system Activation Distance

Airbag instantly inflates when a rider is thrown from the horse.

In a fall or crash, the shock-buffering protection system will be activated instantly after the distance from the rider to the saddle exceeds the "Activation Distance", when the key ball is pulled out of the key box to release CO2 gas into the neck, back, chest, side and hip airbags to inflate them and to absorb the impact on rider's body.

Getting on and off the horse, one-touch release makes it easy.

Easy connection/disconnection of the coiled wire by one-touch release when getting on/off the horse.

If a rider forgets to disconnect the one-touch release when he gets off a horse, he may feel the pulling force which will not be strong enough to activate the airbag system, but will remind him that he has forgotten to do so.

Hit-air can be re-used repeatedly.
Unless it is damaged by the previous activation, it can be re-used by placing the CO2 cartridge.

* Do not reuse the gas cartridge once used. A CO2 cartridge with a hole at its bottom is unusable.

Hit-air airbag structure

Key box holds a CO2 gas cartridge.
Key ball to be pulled out to release the gas into the airbag instantly.
Coiled wire to be connected to the center of the saddle holder.
One-touch release to connect/disconnect a coiled wire when getting on/off the horse.

CO2 gas released from the gas cartridge inflates the urethane airbag instantly.

Airbag inner system (After)

Neck airbag
Chest airbag
Back airbag
Sides airbag
Hip airbag

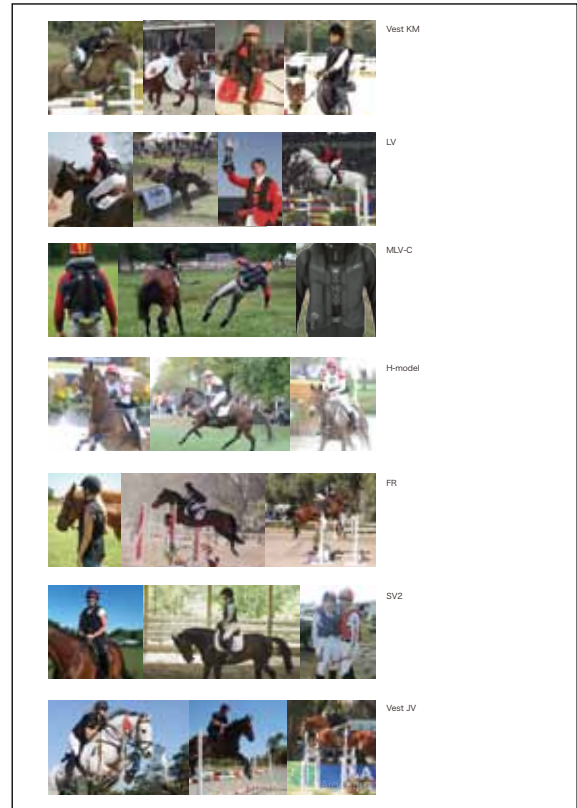
(S-System) Speed up of airbag deployment!
S-System is an improved key box (a device to activate the airbag system) cutting the deployment time (from activation to full inflation of the airbag) in half.

Ordinary system Deployment time about 0.5 second Ordinary system Key Box Color : Black	S-SYSTEM Deployment time about 0.25 second S-system Key Box Color : Gray
---	---

Tested by JARI (Japan Automobile Research Institute, Inc.) *Deployment time may vary depending on the model and the conditions of use (temperature, etc.)

MUGEN DENKO CO., LTD. www.hit-air.com/horse

HR_Photo-set



hit-air_logotype



HR-system_E_30x85_2014

hit-air SHOCK BUFFERING SYSTEM
Horse Riding
hit-air airbag system
Wearable airbag

Hit-air airbag instantly inflates when a rider is thrown from the horse.

An inflated airbag protects your neck, back, chest, sides and hip firmly.

Hit-air airbag structure

Key box holds a CO2 gas cartridge.
Key ball to be pulled out to release the gas into the airbag instantly.
Coiled wire to be connected to the center of the saddle holder.
One-touch release to connect/disconnect a coiled wire when getting on/off the horse.

CO2 gas released from the gas cartridge inflates the urethane airbag instantly.

Airbag inner system (After)

Neck airbag
Chest airbag
Back airbag
Sides airbag
Hip airbag

※ Design and shape of jacket may vary.

MUGEN DENKO JAPAN MUGEN DENKO CO., LTD. www.hit-air.com/horse hit-air SHOCK BUFFERING SYSTEM